

ARTCC ARGENTINO AD 2.SARC

NO VALIDO PARA NAVEGACION REAL. ADAPTADO PARA SU UTILIZACION EN UN AMBITO VIRTUAL
SARC – CORRIENTES

AD 2.17 ESPACIO AEREO ATC

Zona de Control:

- | | |
|-------------------------------------|---|
| 1. Designación: | Zona de Control Corrientes |
| 2. Límites verticales: | <u>FL 065</u>
GND |
| 3. Clasificación del espacio aéreo: | C |
| 4. Distintivo de llamada: | CORRIENTES TORRE |
| 5. Observaciones: | Se brinda Servicio de Control de Aeródromo. El Servicio de Control de Aproximación lo brinda RESISTENCIA CORRIENTES. |
| 6. Altitud de transición: | 3000 FT. |
| 7. Nivel de transición: | QNH de 977 a 994 FL 050
QNH de 995 a 1013 FL 045
QNH de 1014 a 1031 FL 040
QNH de 1032 a 1050 FL 035 |

AD 2.18 INSTALACIONES DE COMUNICACIONES ATS

SERVICIO	DISTINTIVO DE LLAMADA	FRECUENCIA	OBSERVACIONES
GND	Corrientes Superficie	121.750	-
TWR	Corrientes Torre	119.300	-

AD 2.19 CARTAS AERONAUTICAS

- | | |
|-----------------------|--|
| - Plano de aeródromo: | SARC.APT |
| - Cartas IAC: | SARC.IAC NO.1 RWY 20
SARC.IAC NO.2 RWY 20
SARC.IAC NO.3 RWY 20
SARC.IAC NO.4 RWY 20
SARC.IAC NO.5 RWY 02 |

(DEJADO EN BLANCO INTENCIONALMENTE)

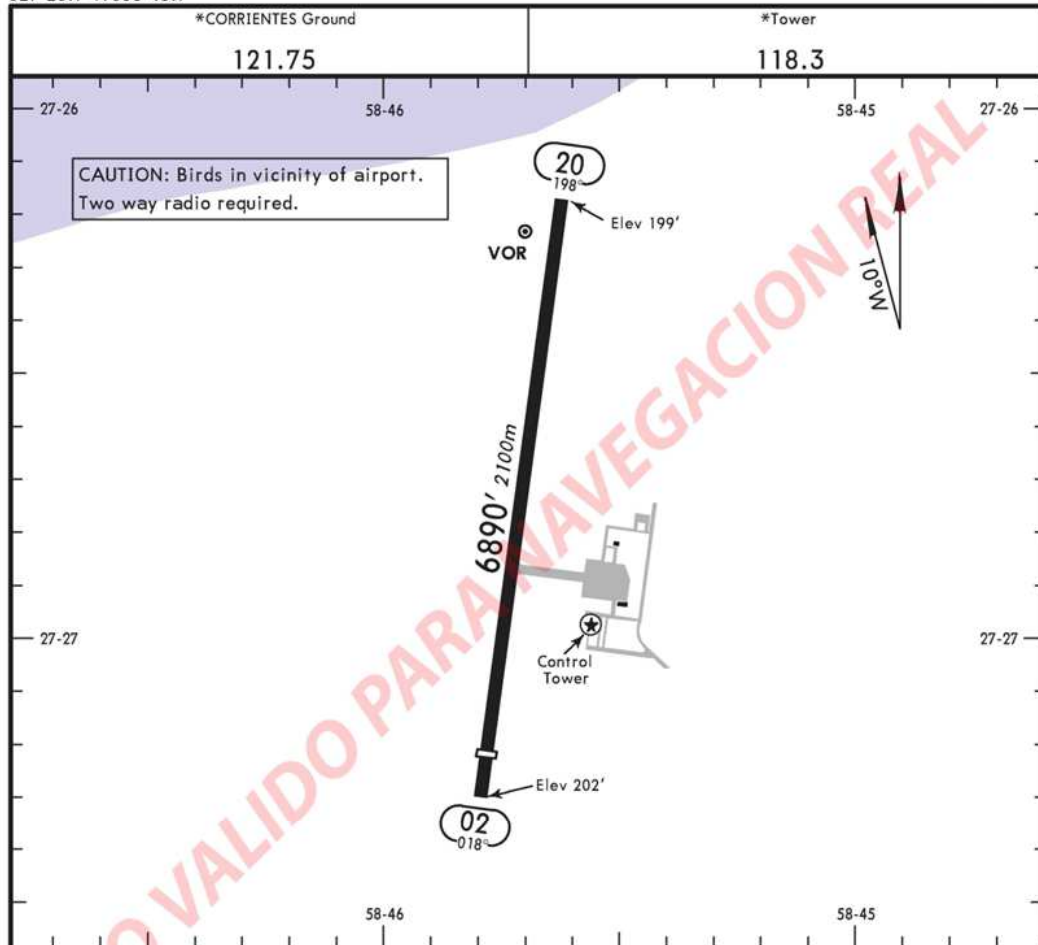
APT

SARC

CORRIENTES, ARGENTINA

Apt Elev 202'
S27 26.7 W058 45.7

CORRIENTES



ADDITIONAL RUNWAY INFORMATION

RWY		USABLE LENGTHS		TAKE-OFF	WIDTH
		Threshold	LANDING BEYOND Glide Slope		
02	HIRL REIL	6398' 1950m			148'
20	HIRL REIL ALS				45m

IAC NO.1 RWY 20

SARC

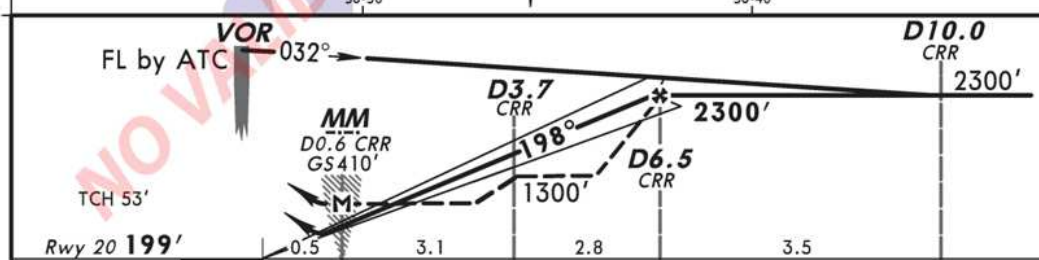
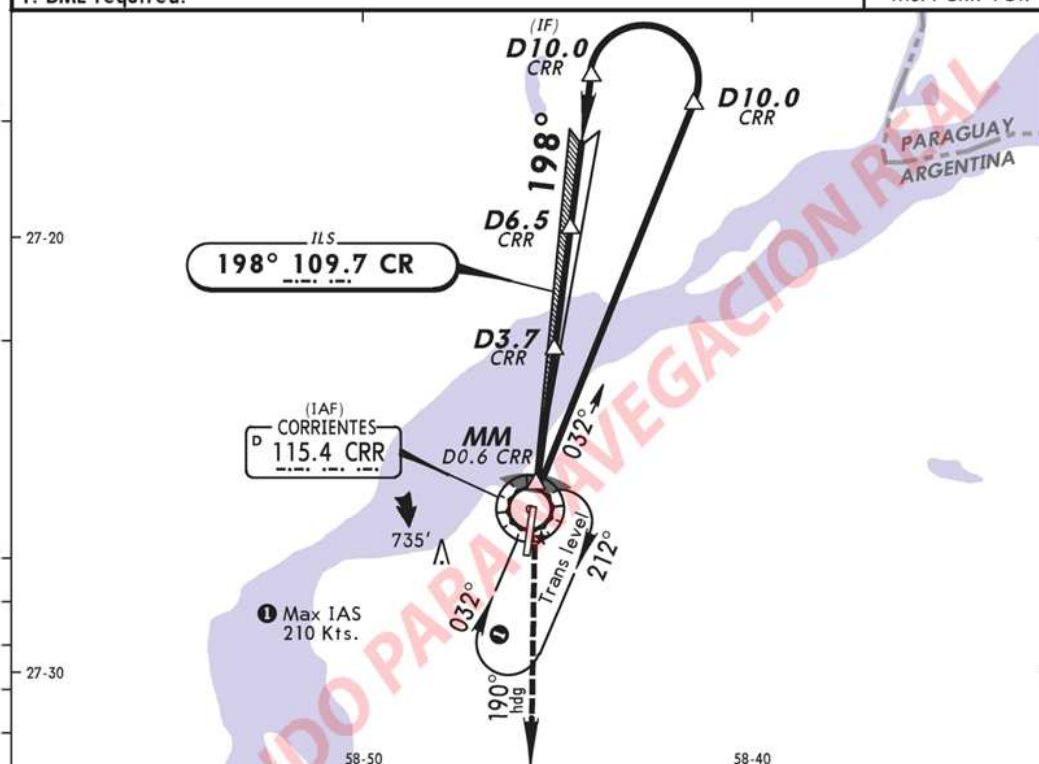
CORRIENTES, ARGENTINA

No. 1

CORRIENTES

VOR DME ILS Rwy 20

RESISTENCIA Control		*CORRIENTES Tower		*Ground	
119.4		118.3		121.75	
LOC CR 109.7	Final Apch Crs 198°	Minimum Alt D6.5 2300' (2101')	ILS DA(H) 399' (200')	Apt Elev 202' Rwy 20 199'	<div><div>3000'</div><div>MSA CRR VOR</div></div>
MISSED APCH: Proceed on 190° heading climbing to 3000' and then proceed in accordance with instructions from CONTROL.					
Alt Set: hPa 1. DME required.		Rwy Elev: 7 hPa	Trans level: By ATC	Trans alt: 3000'	



Gnd speed-Kts	70	90	100	120	140	160	ALS REIL	3000'	190° hdg
GS	3.00°	372	478	531	637	743			
MAP at MM or FAF to MAP	5.9	5:03	3:56	3:32	2:57	2:32			

STRAIGHT-IN LANDING RWY 20					CIRCLE-TO-LAND	
ILS			LOC (GS out)		Not Authorized West of	
DA(H) 399' (200')			MDA(H) 530' (331')		Rwy 02/20 Centerline	
ALS out			ALS out		Max Kts	MDA(H)
A	1200m		2000m		100	690' (488') -2000m
B					135	850' (648') -2800m
C					180	900' (698') -3700m
D					205	900' (698') -4600m
			2400m			

IAC NO.2 RWY 20

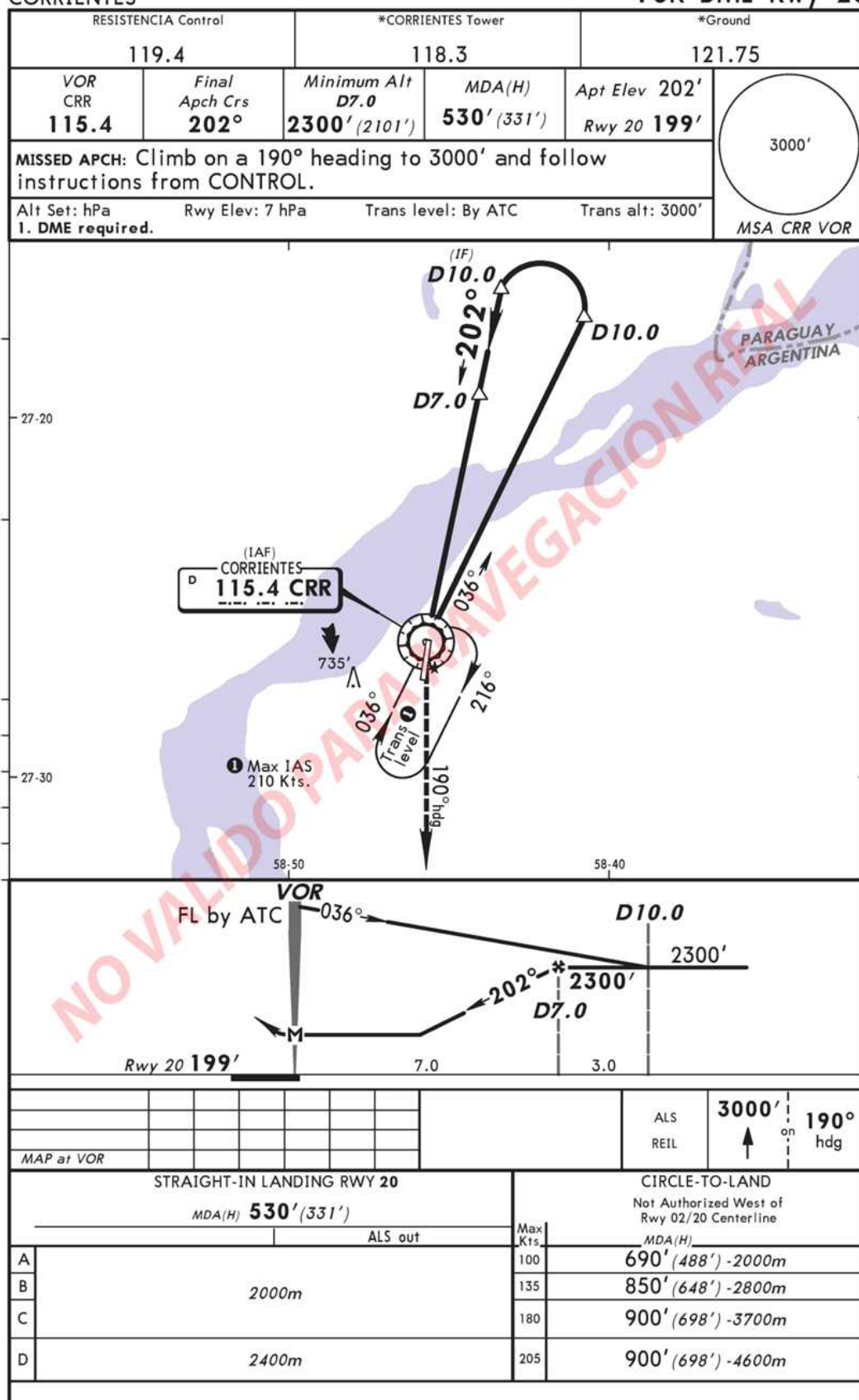
SARC

CORRIENTES, ARGENTINA

No. 2

CORRIENTES

VOR DME Rwy 20



IAC NO.3 RWY 20


SARC
CORRIENTES

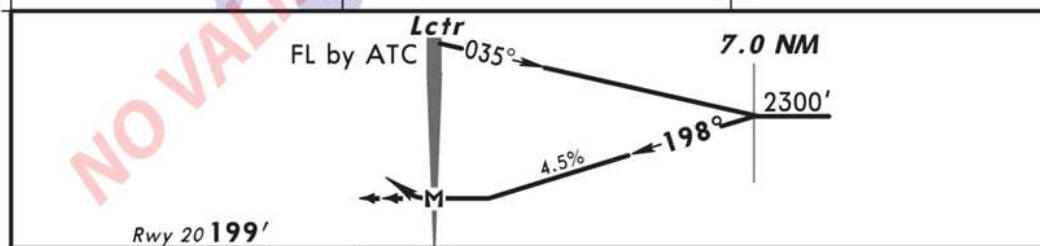
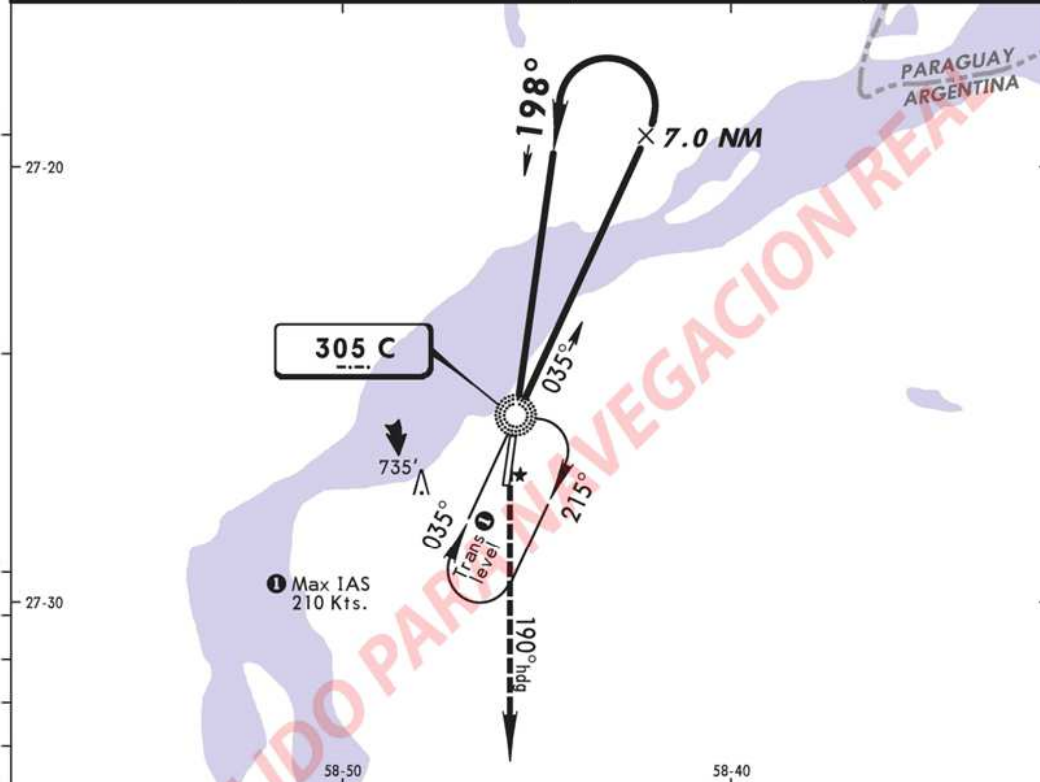
CORRIENTES, ARGENTINA
No. 3
VOR Rwy 20

RESISTENCIA Control		*CORRIENTES Tower		*Ground	
119.4		118.3		121.75	
VOR CRR 115.4	Final Apch Crs 202°	No FAF	MDA(H) 590' (391')	Apt Elev 202'	Rwy 20 199'
MISSED APCH: Climb on a 190° heading to 3000' and follow instructions from CONTROL.					<div style="border: 1px solid black; border-radius: 50%; width: 100px; height: 100px; display: flex; align-items: center; justify-content: center;">3000'</div>
Alt Set: hPa		Rwy Elev: 7 hPa		Trans level: By ATC	
				Trans alt: 3000'	
<div style="text-align: right;">MSA CRR VOR</div>					

STRAIGHT-IN LANDING RWY 20		CIRCLE-TO-LAND	
MDA(H) 590' (391')		Not Authorized West of Rwy 02/20 Centerline	
ALS out		MDA(H)	
A	2000m	Max Kts. 100	690' (488') - 2000m
B	2000m	135	850' (648') - 2800m
C	2000m	180	900' (698') - 3700m
D	2400m	205	900' (698') - 4600m

CORRIENTES, ARGENTINA
No. 4
LCTR Rwy 20

RESISTENCIA Control		*CORRIENTES Tower		*Ground	
119.4		118.3		121.75	
Lctr C 305	Final Apch Crs 198°	No FAF	MDA(H) 580' (381')	Apt Elev 202' Rwy 20 199'	
MISSED APCH: Climb on a 190° heading to 3000' and follow instructions from CONTROL.					
Alt Set: hPa	Rwy Elev: 7 hPa	Trans level: By ATC	Trans alt: 3000'		
					MSA C Lctr



0 0.5								ALS REIL <div> <div>3000'</div> <div>↑</div> <div>on</div> <div>190°</div> <div>hdg</div> </div>
Gnd Speed-Kts	70	90	100	120	140	160		
Descent Gradient 4.5%	319	410	456	547	638	729		
MAP at Lctr								

STRAIGHT-IN LANDING RWY 20		CIRCLE-TO-LAND	
MDA(H) 580' (381')		Not Authorized West of Rwy 02/20 Centerline	
ALS out		Max Kts	MDA(H)
A	2000m	100	690' (488') -2000m
B		135	850' (648') -2800m
C		180	900' (698') -3700m
D	2400m	205	900' (698') -4600m

IAC NO.5 RWY 02

SARC

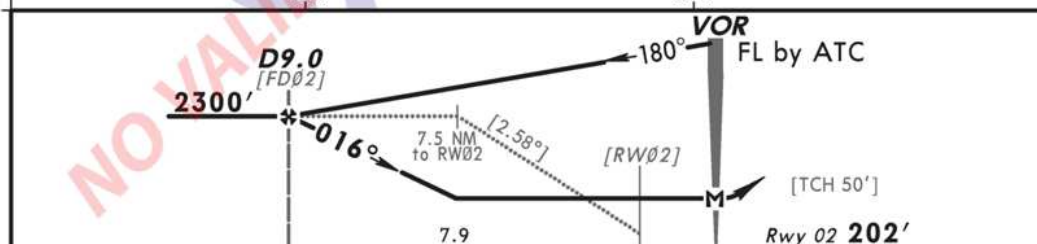
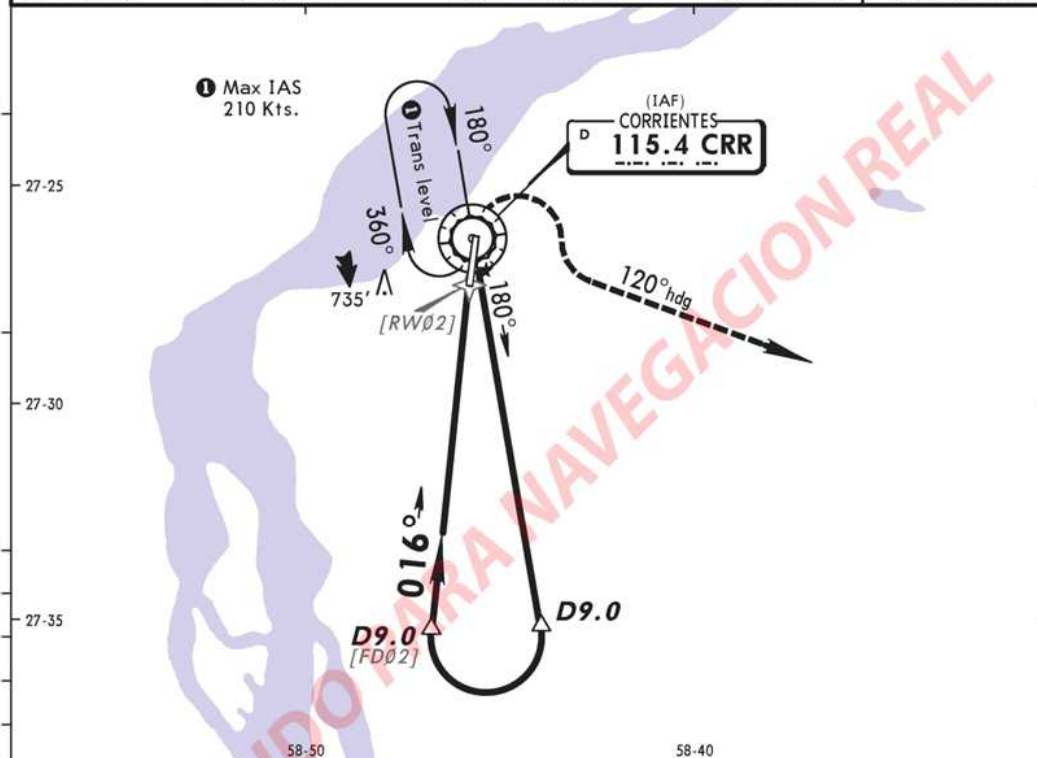
CORRIENTES, ARGENTINA

No. 5

CORRIENTES

VOR Rwy 02

RESISTENCIA Control		*CORRIENTES Tower		*Ground	
119.4		118.3		121.75	
VOR CRR 115.4	Final Apch Crs 016°	Minimum Alt D9.0 2300' (2098')	MDA(H) (CONDITIONAL) 530' (328')	Apt Elev 202' Rwy 02 202'	<div>3000'</div> <div>MSA CRR VOR</div>
MISSED APCH: Climbing RIGHT turn to a 120° heading to 3000' and follow instructions from CONTROL.					
Alt Set: hPa		Rwy Elev: 7 hPa	Trans level: By ATC	Trans alt: 3000'	



Gnd speed-Kts	70	90	100	120	140	160			
Descent gradient 4.5% or Descent Angle [2.58°]	319	411	456	548	639	730			
MAP at VOR									

STRAIGHT-IN LANDING RWY 02				CIRCLE-TO-LAND			
VOR DME		VOR		Not Authorized West of Rwy 02/20 Centerline			
MDA(H) 530' (328')		MDA(H) 590' (388')		Max Kts.	MDA(H)		
A				100	690' (488')-2000m		
B	2000m		2000m	135	850' (648')-2800m		
C				180	900' (698')-3700m		
D	2400m		2400m	205	900' (698')-4600m		